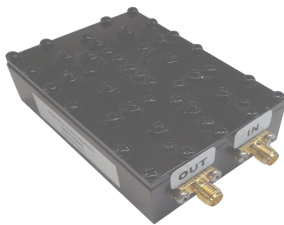




AT-THE CENTER FREQUENCY

New Products Announcement from Anatech Electronics

RF and Microwave Filters for communication systems & mitigation of RF interference



4810 MHz Cavity Bandpass Filter

[AB4810B968](#)

Our AB4810B968 is a Cavity Bandpass Filter with a bandwidth of 50 MHz Min and features SMA Female connectors. This Cavity filter has an insertion loss of 1.7 dB Max and a return loss of 14 dB Min. For more information, [click here](#).



925-960 MHz / 1805-1910 MHz Cavity Duplexer

[AD942-1857D1034](#)

The AD942-1857D1034 is a Cavity Duplexer with SMA Female and N-Type Female connectors. This Cavity duplexer has an insertion loss of 1.0 dB and a return loss of 16 dB. For more information, [click here](#).



121-243 MHz / 380-500 MHz Duplexer

[AE182-440DB5375](#)

Our AE182-440DB5375 is a Duplexer with N-Female connectors and has an isolation of 6 dB. This Duplexer has a VSWR of 1.5 and an insertion loss of 1.0 dB Max. For more information, [click here](#).

Visit our website at www.anatechelectronics.com
Can't find what you're looking for? [Click here](#) to get a quote on custom filters to fit your specifications.



(973) 772-4242



Send us an [email](#)

May 17th, 2023

[Forward this message to a friend](#)

This email is intended for sam.benzacar@anatechelectronics.com.
[Update your preferences](#) or [Unsubscribe](#)